

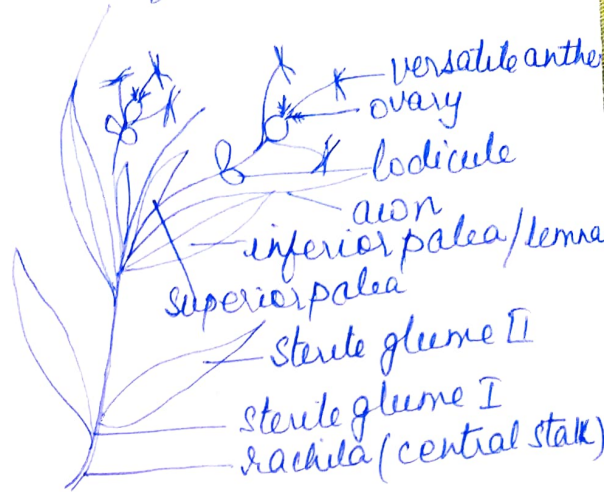
GRAMINAE POACEAE

Monocotyledones
 Glumaceae
 Graminae

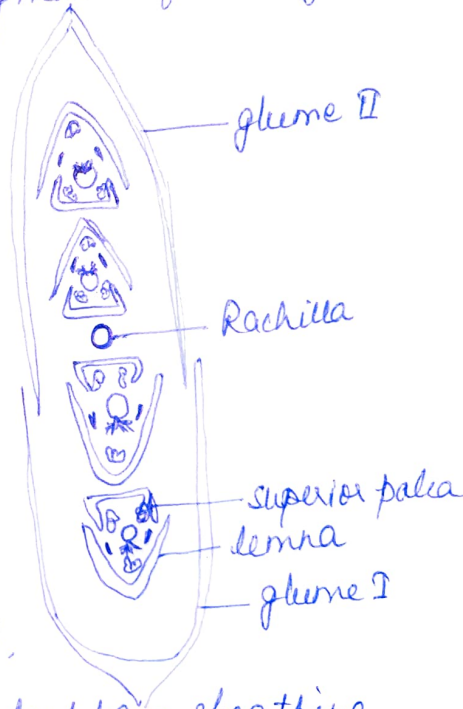
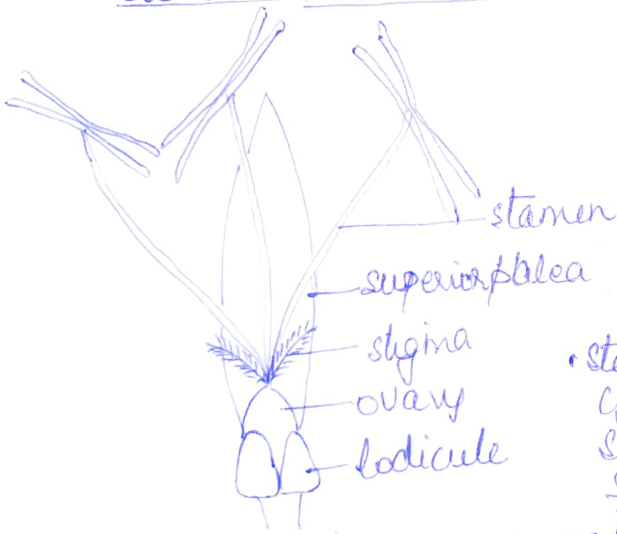
500 genera
 4500 species

cosmopolitan. commonly distributed in temperate regions, but not so common in tropical and sub-tropical regions. The great adaptability of different species has enabled them to survive under most varied conditions. Some are aquatic, some are xerophytic found in arid areas.

- Juncium aestivum गेहूँ
- Hordeum vulgare जौ
- Oryza sativa धान
- Avena sativa जई
- Sorghum vulgare ज्वार
- Pennisetum typhoides बाजरा
- Panicum miliare खावा
- Zea mays मुरग
- Setaria italica काकन
- Saccharum officinarum गन्ना
- Bambusa spinosa बांस
- Phragmites Karka नरकुल
- Saccharum munja मूज, सरकण्डा
- Cynodon dactylon दूब
- Cymbopogon citratus - वेमनशास
- Eleusine coracana रागी



lodicules - perianth leaves
 Bracts represented by lemma and palea
 3 stamens - versatile anthers
 stigmas 2-feathery.



• stem usually cylindrical but solid in Zea mays, Saccharum sp.

awn - extension of midrib
 • leaves alternate, leaf-base sheathing, split with overlapping edges. leaves ligulate.

♂ P₂ (lodicules) A₃ G₁

Rice -

♂ P₂ (lodicules) A₃₊₃ G₁

• Flowers subtended by two glumes.
 • Perianth usually represented by two lodicules.
 • Anthers versatile.
 • Gynoecium monocarpellary, placentation marginal.